

Effectors and memories: Bcl-6 and Blimp-1 in T and B lymphocyte differentiation

Shane Crotty^{1,2}, Robert J Johnston^{1,2} & Stephen P Schoenberger³

Bcl-6 and Blimp-1 have recently been identified as key transcriptional regulators of effector and memory differentiation in CD4⁺ T cells and CD8⁺ T cells. Bcl-6 and Blimp-1 were previously known to be critical regulators of effector and memory differentiation of B lymphocytes. The new findings unexpectedly point to the Bcl-6 and Blimp-1 regulatory axis as a ubiquitous mechanism for controlling effector and memory lymphocyte differentiation and function. Bcl-6 and Blimp-1 are antagonistic transcription factors and can function as a self-reinforcing genetic switch for cell-fate decisions. However, their influences in different lymphocytes are complex. Here we review and examine the commonalities and differences in the functions of these transcription factors in CD4⁺ follicular helper T_{FH} lymphocytes, effector CD8⁺ T lymphocytes and B lymphocytes.

CD4⁺ T cells, CD8⁺ T cells and B cells are distinct lymphocyte populations with unique, critical roles in adaptive immunity. Each population has been thought to be controlled by quite different transcriptional regulation for its individual effector and memory differentiation programs¹. Bcl-6 and Blimp-1 (encoded by *Prdm1*) are transcriptional repressors with the ability to block each other's expression (Fig. 1). The recent identification of central roles for Bcl-6 and Blimp-1 in the differentiation of follicular helper CD4⁺ T cells^{2–4} and CD8⁺ T cell effector and memory differentiation processes^{5–7}, combined with their well documented roles in B cells, has revealed an unexpected common system used in key fate decisions made by mature CD4⁺ T cells, CD8⁺ T cells and B cells.

Bcl-6 and Blimp-1 in B cell differentiation

Bcl6 was first identified as a proto-oncogene frequently expressed in non-Hodgkin's lymphoma as a result of chromosomal translocations^{8–12}. Bcl-6 protein was found to be highly expressed in germinal center B cells, which led to the conclusion that many B cell lymphomas begin as germinal center B cells that then acquire dysregulated Bcl-6 expression¹¹. The germinal center reaction is the process by which antigen-specific B cells mature into the long-lived plasma cells (antibody-secreting cells) and memory B cells that constitute the cellular components of immunological memory for the B cell lineage^{1,13} (Fig. 2). After activation and costimulation, B cells differentiate into either short-lived plasma cells or germinal center B cells^{1,14} (Fig. 2). Short-lived plasma cells stop proliferating and elaborate a large secretory apparatus for producing antibodies to quickly combat infection^{1,14}. In contrast, germinal center

B cells have a minimal secretory apparatus and are instead specialized for proliferation and affinity maturation, the exquisitely complex process of rapidly evolving a B cell receptor of higher affinity for the production of high-affinity, isotype-switched antibody^{11,15}. This process involves rapid proliferation and substantial amounts of DNA damage (both class-switch recombination and somatic hypermutation, controlled by activation-induced cytidine deaminase (AID)¹⁶). Bcl-6 is a crucial inducer of germinal center B cell proliferation and a crucial inhibitor of the DNA-damage response¹¹ (Figs. 1 and 2). Bcl-6-deficient mice have an absence of germinal center B cells and affinity maturation^{17–19}. Bcl-6-deficient B cells are nevertheless able to differentiate into plasma cells and secrete antibodies^{18,20}, although long-term antibody responses in *Bcl6*^{-/-} mice are considerably diminished, as the germinal center reaction is required to produce the majority of long-lived plasma cells¹⁹ (Fig. 2). Constitutive expression of Bcl-6 in B cells *in vivo* results in large germinal centers, which again confirms the central role of Bcl-6 in germinal center B cell differentiation²¹.

Plasma cell differentiation, in contrast, critically depends on Blimp-1 (refs. 22,23) and the absence of Bcl-6 (refs. 11,23). The role of Blimp-1 in B cell development was first demonstrated by the ability of ectopic Blimp-1 expression to induce human B lymphoma cells to differentiate into cells with plasma cell features²⁴. Blimp-1 is highly expressed in plasma cells and controls many genes important for plasma cell differentiation^{23,25–27}, including *Xbp1*, which induces formation of the secretory apparatus necessary for the production of large amounts of antibody^{28,29}. Blimp-1 also inhibits genes involved in cellular proliferation, such as *Myc* and *Bcl6*, which thereby allows the terminal differentiation of plasma cells into a post-mitotic state^{23,30}.

Genetic ablation of Blimp-1 in B cells prevents mature B cells from differentiating into either short-lived or long-lived plasma cells, which results in dramatically reduced antibody titers²². Interestingly, germinal centers are enlarged in these mice, and memory B cells are generated²². Together with experiments using ectopic expression of Blimp-1, these

¹Division of Vaccine Discovery, La Jolla Institute for Allergy and Immunology, La Jolla, California, USA. ²Department of Medicine, University of California San Diego School of Medicine, La Jolla, California, USA. ³Laboratory of Cellular Immunology, La Jolla Institute for Allergy and Immunology, La Jolla, California, USA. Correspondence should be addressed to S.C. (shane@liai.org).

Published online 19 January 2010; doi:10.1038/ni.1837

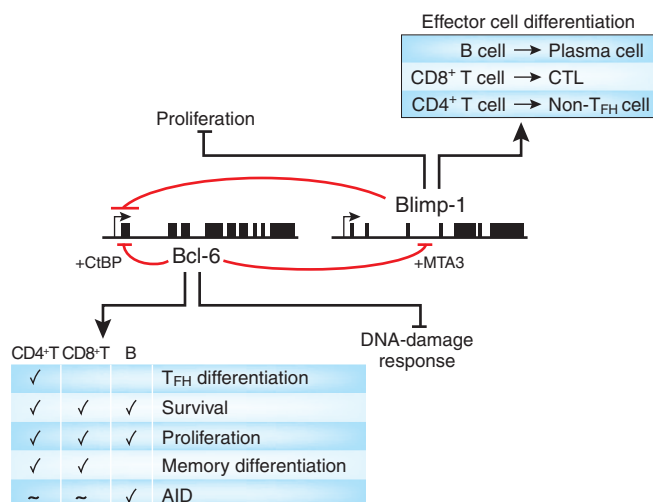


Figure 1 Bcl-6 and Blimp-1 are reciprocally antagonistic transcription factors. Mechanisms of Bcl-6 and Blimp-1 antagonism and their broad influences on lymphocyte differentiation and function. CTL, cytotoxic T lymphocyte.

data suggest that Blimp-1 is a master regulator of plasma cell differentiation with limited or no roles in germinal center B cell and memory B cell differentiation (Fig. 2).

Bcl-6 protein can bind to *Prdm1* and directly repress Blimp-1 expression^{20,31,32} (Fig. 1) and thereby induce germinal center differentiation while inhibiting plasma cell differentiation¹¹. Conversely, Blimp-1 protein can bind to *Bcl6* and directly repress Bcl-6 production³³ (Fig. 1) and thereby induce plasma cell differentiation while inhibiting germinal center B cell differentiation^{23,25}. Although details about the kinetics of the expression of Bcl-6 and Blimp-1 during B cell activation and differentiation *in vivo* still remain to be fully elucidated^{25,34}, the reciprocal antagonism between Bcl-6 and Blimp-1 clearly provides a powerful mechanism for inducing and then reinforcing bimodal fate 'decisions' in B cell effector and memory differentiation.

Bcl-6 and Blimp-1 in CD4⁺ T cell differentiation

Although Bcl-6 and Blimp-1 have been studied intensively in B cells for some 15 years, the functions of Bcl-6 and Blimp-1 in T lymphocytes remained relatively unexplored until recently²⁵. A series of new data has now demonstrated that Bcl-6 is the master regulator of CD4⁺ follicular helper T cells (T_{FH} cells)²⁻⁴ and that Blimp-1 is a critical antagonist of T_{FH} differentiation².

CD4⁺ T cells can differentiate into at least four different effector lineages (T helper type 1 (T_{H1}) cells, T_{H2} cells, T_{H17} cells and regulatory T cells (T_{reg} cells)), which allows them to powerfully tailor the larger immune response to best clear a given infection or control inflammation³⁵. CD4⁺ T cell help to B cells is essential for the generation of germinal centers, memory B cells and long-lived plasma cells¹. CD4⁺ T_{H2}, T_{H1} and T_{H17} cells are not required for germinal center formation or B cell help³⁶⁻³⁸. Therefore, it had been proposed, mainly on the basis of gene-expression profiling and *in vitro* T cell help-B cell help assays, that T_{FH} may represent a distinct CD4⁺ T cell effector lineage specialized for B cell help³⁹⁻⁴¹. However, unlike the other effector lineages, until recently T_{FH} cells had no lineage-speci-

fying master regulator transcription factor (such as T-bet, GATA-3, RORγt or Foxp3)⁴².

Three new studies have now shown that Bcl-6 is a master regulator of T_{FH} differentiation²⁻⁴. Constitutive expression of Bcl-6 in CD4⁺ T cells drives nearly absolute T_{FH} differentiation *in vivo*². These T_{FH} cells induce larger germinal centers and higher antigen-specific antibody titers². In contrast, *Bcl6*^{-/-} CD4⁺ T cells are unable to differentiate into T_{FH} cells *in vivo*, which demonstrates that Bcl-6 is necessary for T_{FH} differentiation²⁻⁴. *Bcl6*^{-/-} CD4⁺ T cells become activated and proliferate in response to protein immunization but are unable to drive germinal center formation²⁻⁴. These results confirm that T_{FH} cells are a distinct subset of helper CD4⁺ T cells, reveal that Bcl-6 is a T_{FH} master regulator both necessary and sufficient for T_{FH} differentiation, and demonstrate that T_{FH} cells are uniquely able to drive the germinal center reaction.

Interestingly, although T_{FH} cells have high Bcl-6 expression⁴², the remaining antigen-specific CD4⁺ T cells (non-T_{FH} cells) have high Blimp-1 expression^{2,43,44}, which indicates that Bcl-6 versus Blimp-1 expression may be a central cell fate decision of differentiating CD4⁺ T cells. Constitutive expression of Blimp-1 blocks Bcl-6 expression and T_{FH} differentiation but does not block the proliferation and differentiation of non-T_{FH} CD4⁺ cells². Like *Bcl6*^{-/-} CD4⁺ T cells, Blimp-1-expressing CD4⁺ T cells cannot induce germinal center formation, which results in considerably reduced antibody titers². Conversely, Blimp-1-deficient CD4⁺ T cells preferentially differentiate into T_{FH} cells *in vivo*². Therefore, in CD4⁺ T cells, Blimp-1 is a physiological regulator of Bcl-6 expression, and vice versa².

There are two models for interpreting the Bcl-6 and Blimp-1 results outlined above in the context of CD4⁺ T cell lineage differentiation (Fig. 3a,b). The simplest model proposes that T_{FH} differentiation occurs via a fully independent differentiation pathway controlled by Bcl-6, analogous to the differentiation pathways for T_{H1}, T_{H2}, T_{H17} and inducible T_{reg} (iT_{reg}) cells³⁷ (model 1; Fig. 3a). A second model posits that T_{FH} cells are a distinct type of effector CD4⁺ T cell but that the T_{FH} differentiation pathway is not fully independent of T_{H1}, T_{H2}, T_{H17} or iT_{reg} differentiation^{2,45} (model 2; Fig. 3b). In this second model, a CD4⁺ T cell is primed by a dendritic cell and acquires early T_{H1}, T_{H2}, T_{H17}, iT_{reg} or unbiased T_{H0} cell characteristics (Fig. 3b). The primed CD4⁺ T cell (early effector) can then further polarize into a Blimp-1^{hi} full effector T_{H1} cell², T_{H2} cell^{2,43}, T_{H17} cell or iT_{reg} cell⁴⁶ (Fig. 3b). Alternatively, the primed CD4⁺ T cell may encounter a B cell—which induces high Bcl-6 expression—and differentiate into a T_{FH} cell (Fig. 3b). In support of model 1, there is evidence that Bcl-6 can inhibit T_{H1}, T_{H2} and/or T_{H17} gene expression^{3,4,17,47}, and this model fits well with conventional helper T cell schematics. However, several lines of evidence indicate that the second

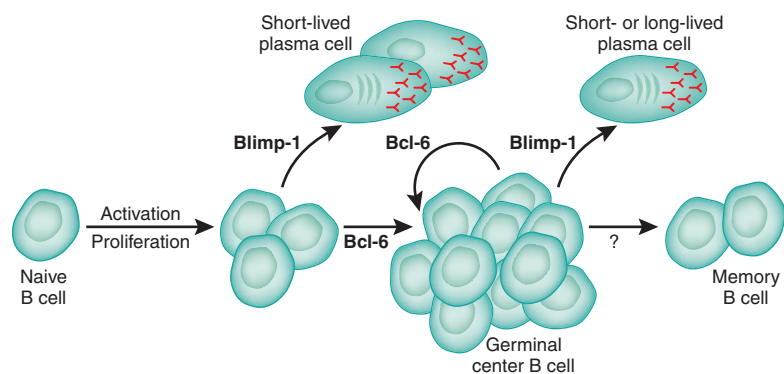


Figure 2 Roles of Bcl-6 and Blimp-1 in B cell differentiation. Bcl-6 and Blimp-1 are required at various steps of B cell differentiation (as indicated by arrow labels).

model is probably a more accurate representation of the *in vivo* biology. First, T_{FH} cells produce T_{H1} cytokines^{2,48–50}, T_{H2} cytokines^{43,48,50–52} or T_{H17} cytokines⁵³. The production of T_{H1} , T_{H2} or T_{H17} cytokines probably enables T_{FH} cells to specify the antibody isotypes produced during the B cell response⁵⁰. Nevertheless, T_{FH} cells produce lower amounts of T_{H1} , T_{H2} or T_{H17} cytokines than do non- T_{FH} cells^{2,4,43}, which express Blimp-1 (refs. 2,43). Therefore, Bcl-6-expressing T_{FH} cells seem to have some T_{H1} , T_{H2} or T_{H17} characteristics acquired at the initial dendritic cell priming (Fig. 3b), but those characteristics are partially subdued in the presence of Bcl-6. Second, dendritic cell priming is insufficient for T_{FH} differentiation *in vivo*, as T_{FH} cells are not observed in the absence of cognate B cells^{2,54}, which indicates that the interaction of a primed $CD4^+$ T cell with a cognate B cell is a key second signal for the induction of T_{FH} differentiation^{2,45,54}. T_{FH} differentiation can be restored in B cell-deficient mice by the expression of Bcl-6 in antigen-specific $CD4^+$ T cells, which suggests that cognate B cells specifically induce Bcl-6 expression in $CD4^+$ T cells² (Fig. 3b).

Blimp-1 is expressed late in $CD4^+$ T cell differentiation *in vitro*^{25,55}. Blimp-1 expression is therefore associated with highly polarized effector $CD4^+$ T cells, late in differentiation, with a high cytokine-secretion capacity (Fig. 3b). This is intriguingly similar to the role of Blimp-1 in effector $CD8^+$ T cell differentiation (Fig. 3c; discussed below) and similar to (although less extreme than) its role in plasma cells, which have high expression of Blimp-1 and an enormous secretion capacity (Fig. 4). Furthermore, the highly polarized Blimp-1-expressing effector $CD8^+$ T cells or plasma cells have limited or no proliferative capacity, respectively, which suggests that Blimp-1^{hi} effector $CD4^+$ T cells may have similar properties (Fig. 4). Blimp-1-deficient T cells exhibit hyperproliferation *in vivo*, which results in autoimmunity^{46,56}. Early $CD4^+$ T cell effector differentiation depends on neither Bcl-6 nor Blimp-1 (refs. 3,46,56). Those findings are consistent with our model, in which Blimp-1 is not required for the priming and development of $CD4^+$ T cell effector functions (cytokine secretion) but is critical for full effector cell differentiation and inhibition of the proliferation of those effector cells (Fig. 3b).

Although Bcl-6 and Blimp-1 are clearly central to effector $CD4^+$ T cell differentiation (and possibly memory, as discussed below), many aspects of their involvement remain unclear. In particular, how Bcl-6 controls T_{FH} differentiation is an area of intensive study. Initial reports have indicated that Bcl-6 can regulate key cytokine receptors (such as the interleukin 6 receptor (IL-6R) or IL-21R)³ and suppress an important cluster of microRNAs⁴, as well as suppress T_{H1} , T_{H2} and T_{H17} gene expression^{3,4,44}. The specific roles of Blimp-1 in $CD4^+$ T cell effector differentiation remain to be extensively explored.

Bcl-6 and Blimp-1 in $CD8^+$ T cell differentiation

Naive $CD8^+$ T cells differentiate into cytotoxic effectors (cytotoxic T lymphocytes) that are critical for the control and clearance of intracellular pathogens. Recent studies have shown that Blimp-1 is expressed in effector and memory $CD8^+$ T cells^{46,56,57} and that the absence of Blimp-1 can result in excessive proliferation and increased numbers of memory $CD8^+$ T cells⁵⁶. Recent data have now convincingly demonstrated that Blimp-1 is an important regulator of effector $CD8^+$ T cell function, proliferation and conversion into memory cells^{5–7}. Virus-specific Blimp-1-deficient $CD8^+$ T cells fail to differentiate into KLRG1^{hi}IL-7R^{lo} cells^{6,7}, also known as short-lived effector cells because of their effector functions and limited ability to survive and convert into memory cells⁵⁸. Instead, Blimp-1-deficient $CD8^+$ T cells preferentially differentiate into KLRG1^{lo}IL-7R^{hi} memory precursor effector cells^{6,7}, which exhibit better survival than short-lived effector cells and have the potential to convert into memory $CD8^+$ T cells⁵⁸

(Fig. 3c). Blimp-1-deficient $CD8^+$ T cells have lower expression of effector molecules important for cytotoxicity, such as granzyme B^{5–7}. Nonetheless, Blimp-1-deficient $CD8^+$ T cells have sufficient effector functions to control and clear acute infection with lymphocytic choriomeningitis virus or influenza virus^{6,7}. Together these studies elegantly demonstrate that Blimp-1 expression is required for the terminal differentiation of effector $CD8^+$ T cells^{6,7}.

Blimp-1-deficient $CD8^+$ T cells express more Bcl-6 than do wild-type $CD8^+$ T cells^{6,7}. Constitutive Bcl-6 expression suppresses granzyme B expression⁵⁹. Conversely, *Bcl6*^{-/-} $CD8^+$ T cells express more granzyme B⁵⁹. Bcl-6 and Blimp-1 are therefore probably reciprocal regulators of $CD8^+$ T cell effector differentiation.

Certain commonalities can be gleaned from the $CD8^+$ and $CD4^+$ T cell studies about how Blimp-1 and Bcl-6 regulate these cell types. In both $CD8^+$ and $CD4^+$ T cells, Blimp-1 is critical for most terminal effector cell differentiation (Fig. 3b,c). Terminal differentiation is characterized by low proliferative potential and high effector molecule secretion (Fig. 4). Blimp-1-deficient $CD8^+$ T cells are diverted to a memory-precursor differentiation pathway with enhanced proliferative potential and have lower effector molecule production (Figs. 3 and 4). Blimp-1-deficient $CD4^+$ T cells are diverted away from terminal T_{H1} or T_{H2} differentiation and toward T_{FH} differentiation² (Fig. 3) and exhibit greater proliferative potential^{46,56}. These proliferation and secretion commonalities of Blimp-1-expressing T cells are again shared with the B cell lineage, in which B cells with high Blimp-1 expression are terminally differentiated effectors (plasma cells) with low proliferative potential and high effector molecule production (Fig. 4).

Regulation of T and B cell memory by Bcl-6 and Blimp-1

Blimp-1-deficient $CD8^+$ T cells preferentially differentiate into memory $CD8^+$ T cells^{6,7,56}, and Bcl-6 is upregulated in memory $CD8^+$ T cells⁶⁰. Blimp-1 is also expressed differently by the two main memory $CD8^+$ T cell subsets^{6,7}. Effector memory T cells, which are functionally potent memory $CD8^+$ T cells that patrol the periphery but proliferate poorly^{58,61}, have relatively high Blimp-1 expression. In contrast, central memory T cells have relatively low Blimp-1 expression^{6,7} (Fig. 4) and are characterized by lower immediate effector functions and high proliferative potential^{58,61}.

Bcl-6-deficient $CD8^+$ T cells proliferate poorly and are less able to acquire a memory-like phenotype⁶². Conversely, $CD8^+$ T cells overexpressing Bcl-6 generate a larger memory cell population⁶³. There is also some limited evidence that Bcl-6 has a role in memory $CD4^+$ T cells. Bcl-6-deficient $CD4^+$ T cells have an impaired ability to persist as memory cells after immunization⁶⁴. Consistent with that idea, Blimp-1 expression is lower in memory $CD4^+$ T cells than in effector $CD4^+$ T cells⁴⁶. Given that Bcl-6 promotes proliferation, Bcl-6 expression may be a key attribute of $CD8^+$ and $CD4^+$ T cell memory differentiation that Blimp-1 inhibits to direct cells toward terminal effector differentiation.

A simple model is that expression of Bcl-6 and Blimp-1 is a bimodal, self-reinforcing switch between effector and memory T cell differentiation, which is conserved between $CD8^+$ and $CD4^+$ T cells. However, this is an oversimplification, because among effector $CD4^+$ T cells, only T_{FH} cells depend on Bcl-6 expression^{2–4} and the absence of Blimp-1 (ref. 2). Furthermore, effector $CD8^+$ T cells have a substantial amount of functionality in the absence of Blimp-1 (refs. 5–7,56). A somewhat more sophisticated model (Fig. 3b,c) incorporates the multiple stages of these $CD4^+$ and $CD8^+$ T cell differentiation pathways and highlights possible parallels in the activities of Bcl-6 and Blimp-1 in each lineage. Of course, many other proteins are also important participants in $CD4^+$ and $CD8^+$ T cell differentiation and functionality, but here we are focusing only on the contributions of Bcl-6 and Blimp-1.

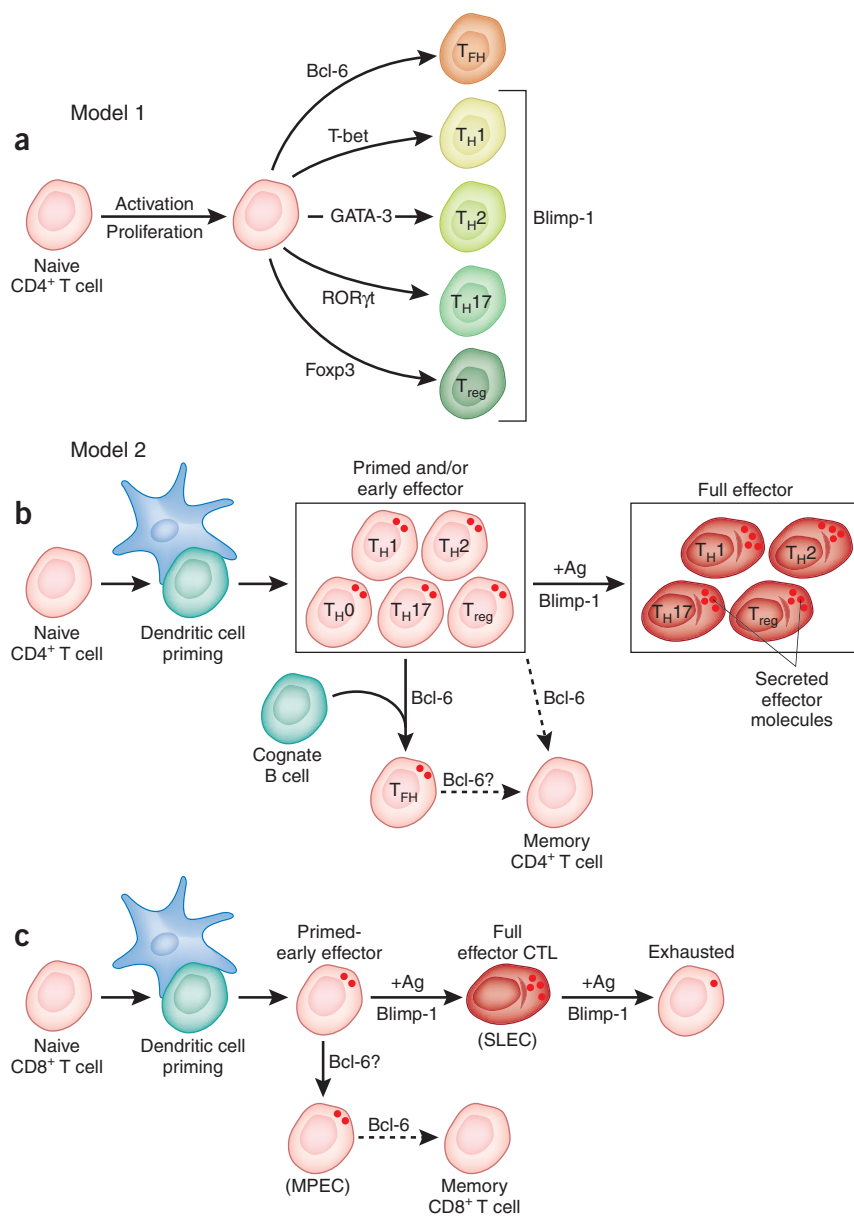


Figure 3 Roles of Bcl-6 and Blimp-1 in T cell differentiation. **(a,b)** Two proposed models of effector CD4⁺ T cell differentiation: model 1 **(a)** and model 2 **(b)**. In **b**, the partial T_{H1}, T_{H2}, T_{reg} and T_{H17} characteristics of T_{FH} cells are not shown, for simplicity. **(c)** A model of CD8⁺ T cell effector and memory differentiation highlighting the similarities to CD4⁺ T cells. Dotted lines and question marks indicate uncertainty. +Ag, antigen stimulation; SLEC, short-lived effector cell; MPEC, memory precursor effector cell.

The parallels between the functions of Blimp-1 and Bcl-6 in CD4⁺ and CD8⁺ T cells also raise a challenging question about the relationship between memory CD4⁺ T cells and the T_{FH} and non-T_{FH} effector CD4⁺ T cell lineages (Fig. 3b,c). Do Bcl-6^{hi}Blimp-1^{lo} T_{FH} cells convert more readily into memory cells than do Bcl-6^{lo}Blimp-1^{hi} effector CD4⁺ T cells? Additional studies of the mechanistic role of Bcl-6 in CD8⁺ and CD4⁺ T cell memory differentiation are much needed.

The role of Bcl-6 in memory B cell differentiation is controversial^{13,65,66}. Bcl-6 is generally considered crucial for the generation of B cell memory, as long-lived plasma cells and memory B cells are mainly products of germinal centers (Fig. 2). It has been proposed that Bcl-6 expression is necessary to prevent germinal center B cells from

differentiating into plasma cells, allowing them to differentiate into memory B cells instead^{65,67}. Human memory B cells do not express Blimp-1 (refs. 66,68). It has also been shown that Bcl-6 expression can enhance B cell survival and thus may regulate memory B cell self-renewal^{19,69}. However, Bcl-6 mRNA expression is not correlated with memory B cell differentiation in mice⁷⁰ or humans⁶⁶, and some memory B cells can develop in Bcl-6-deficient mice in the absence of germinal centers¹⁹. High Bcl-6 expression sustains a germinal center B cell phenotype and inhibits human memory B cell differentiation *in vitro*⁶⁶. It remains to be determined what transcription factor induces memory B cell differentiation from Bcl-6-expressing germinal center B cells.

Blimp-1 in exhausted CD8⁺ T cells

Effector CD8⁺ T cells can become exhausted by persistent antigen presentation during chronic viral infection^{71,72}. Chronic viral infections associated with T cell exhaustion, such as infection with human immunodeficiency virus or hepatitis C virus, are the cause of enormous human suffering and loss of life⁷³. Exhausted CD8⁺ T cells are functionally impotent and proliferate poorly⁷², but when exhaustion is reversed in mice by therapeutic treatment, proliferation and effector functions are impressively restored^{73–77}. Exhausted CD8⁺ T cells in mice chronically infected with lymphocytic choriomeningitis virus have abnormally high Blimp-1 expression⁵. In contrast, Blimp-1-deficient CD8⁺ T cells resist exhaustion and exhibit improved cell numbers⁵. Despite this less exhausted state, mice with conditional knockout of Blimp-1 are unable to efficiently clear the virus⁵. This is probably because Blimp-1 is necessary for effector functions and terminal differentiation, as has been shown in mice with CD8⁺ T cells heterozygous for *Prdm1* deletion, which clear virus more rapidly than do wild-type mice⁵.

Mechanisms of action

Although Bcl-6 and Blimp-1 are clearly powerful regulators of effector and memory cell fate decisions by CD4⁺ T cells, CD8⁺ T cells and B cells, it is less clear how Bcl-6 and Blimp-1 accomplish these functions at the level of transcriptional repression. It is also unclear to what extent the gene targets of Bcl-6 and Blimp-1 remain constant across different types of lymphocytes.

Bcl-6 targets are best understood in B cells. Bcl-6 suppresses a collection of DNA-damage–response genes and inducers of apoptosis and cell cycle arrest (p53, cyclin D2 and ATR) while facilitating AID expression in germinal center B cells¹¹ (Fig. 1). AID induces class-switch recombination and somatic hypermutation¹⁶, which would result in cell cycle arrest and apoptosis if these normal DNA-damage responses were not suppressed by Bcl-6 (ref. 11). These Bcl-6 targets are B cell specific and are not shared by CD4⁺ or CD8⁺ T cells (although, curiously, some AID

expression is observed in T_{FH} $CD4^+$ T cells² and Blimp-1-deficient $CD8^+$ T cells⁶).

A key aspect of Bcl-6 biology is that Bcl-6 dimers repress transcription only in combination with corepressors, and there are many corepressors that Bcl-6 can partner with. Most corepressors bind to or near the Bcl-6 bric-a-bric, tramtrack, broad complex–poxvirus zinc-finger domain, including BCoR^{78,79}, N-CoR^{80,81}, SMRT^{80,81}, CtBP³¹, BAZF⁸², PLZF⁸³, MIZ1 (encoded by *Zbtb17*)⁸⁴ and others. At least some of these partners can also form mixed complexes^{31,83}. The corepressor MTA3 binds to a second domain of the Bcl-6 protein called RDII (refs. 32,85). The corepressor ETO (encoded by *Runx1t1*) binds to the zinc-finger domain of Bcl-6⁸⁶. The use of these many different corepressors allows combinatorial targeting of Bcl-6 to different collections of genes in different cell types at different times. For example, Bcl-6 inhibits Blimp-1 via interactions with MTA3 (refs. 32,87; Fig. 1) and AP-1 (ref. 88). Bcl-6 protein inhibition of the *Bcl6* gene instead depends on CtBP³¹ (Fig. 1). Whole-genome chromatin immunoprecipitation plus microarray analysis has revealed that Bcl-6 regulates a very different set of genes in primary germinal center B cells than in a diffuse large B cell lymphoma³³. Of 3,345 genes bound by Bcl-6, less than half of those targets are bound in both cell types³³, which indicates that differences in corepressor availability probably have considerable effects on Bcl-6 gene targeting in different lymphocyte types at different differentiation stages.

There are only a smattering of obvious gene-expression changes conserved between Bcl-6-expressing T_{FH} $CD4^+$ T cells and Bcl-6-expressing germinal center B cells, beyond Blimp-1 inhibition^{2,89}. This indicates that different Bcl-6 corepressors are present in T_{FH} cells and germinal center B cells, which act together to suppress different constellations of genes in the two cell types. There are also only limited similarities in the gene-expression changes in Bcl-6-expressing T_{FH} $CD4^+$ T cells and Blimp-1-deficient $CD8^+$ T cells (which have higher expression of Bcl-6)^{2,6}, which again suggests that the specific gene-expression changes controlled by the Bcl-6–Blimp1 regulatory axis are more different than similar in B cells, $CD4^+$ T cells and $CD8^+$ T cells and are therefore probably highly influenced by the available corepressors. The present understanding of the genes and gene networks controlled by Bcl-6 remains limited, particularly in T cells, and this is an area that now needs extensive examination, given the importance of Bcl-6 in T cell functions.

It is also important to note that Bcl-6 mRNA quantities are a poor indicator of Bcl-6 protein expression⁹⁰ and a poor indicator of Bcl-6 function, as Bcl-6 is controlled by a wide array of post-transcriptional regulatory mechanisms, including absence of translation at the mRNA level⁹⁰, as well as protein phosphorylation⁹¹, acetylation⁹² and cofactor-mediated degradation⁹³. This allows intense signal integration by Bcl-6, as the functional amount of Bcl-6 protein in a cell can be heavily influenced by many transcriptional and post-transcriptional activities, in combination with changes in the availability of corepressors.

The inhibition of Blimp-1 by Bcl-6 is a common feature in germinal center B cells and $CD4^+$ T_{FH} cells^{2,20,31} and probably in differentiating $CD8^+$ T cells^{6,7}. Because Bcl-6 and Blimp-1 are reciprocal antagonists,

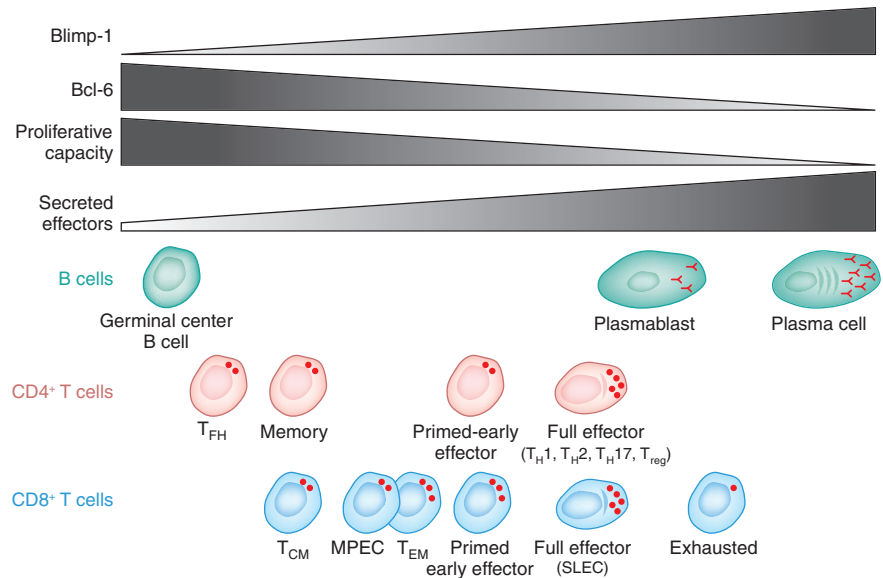


Figure 4 Functional effects of different amounts of Bcl-6 and Blimp-1 expression. The amount of Bcl-6 and Blimp-1 expression is balanced differently in different lymphocytes at distinct differentiation stages. Lymphocytes with higher expression of Bcl-6 exhibit greater proliferative capacity but less secretory capacity. Lymphocytes with higher expression of Blimp-1 exhibit lower proliferative capacity and greater secretory capacity. Although exhausted $CD8^+$ T cells have large amounts of Blimp-1 and lower proliferative capacity, they do not have more secreted effectors. T_{CM} , central memory T cell; T_{EM} , effector memory T cell.

it is challenging to disentangle their direct effects versus their effects achieved via inhibition of each other. How much of the effect of Bcl-6 expression in a given cell type is via inhibition of Blimp-1 and vice versa? These and related questions need to be addressed.

Like Bcl-6 target genes, Blimp-1 target genes are best characterized in B cells. Blimp-1 targets in B cells can be placed into three functional categories: inhibition of proliferation (c-Myc^{30,94} and E2F1 (ref. 27)), induction of secretory machinery (XBP-1 (ref. 27)), and inhibition of the germinal center B cell program (Bcl-6 (ref. 27), Pax5 (ref. 95) and CIITA^{96,97}). Inhibition of proliferation is a common feature of B cells, $CD4^+$ T cells and $CD8^+$ T cells with high expression of Blimp-1 (it is important to note that the antiproliferative effects of Blimp-1 are dose dependent^{2,26,55}). The gene encoding Id3, a pro-proliferation transcription factor⁹⁸ expressed in T_{FH} cells², germinal center B cells²⁷ and Blimp-1-deficient $CD8^+$ T cells⁶, seems to be one common Blimp-1 target in both B cells and T cells and may be a key component of the antiproliferative effects of Blimp-1.

Induction of the secretory apparatus by Blimp-1 (via XBP-1 and possibly other mechanisms) is most dramatic for plasma cells²³ but also occurs in T cells⁹⁹, as terminally differentiated effector T cells are specialized producers of cytokines and other secreted products. In both plasma cells and terminally differentiated effector T cells, the cellular metabolism is optimized for protein production and secretion instead of DNA synthesis and proliferation (Fig. 4).

One of the most interesting targets of Blimp-1 that has been characterized in T cells is the gene encoding IL-2 (refs. 25,55,100), a cytokine critical for T cell and B cell proliferation and differentiation. T_{FH} cells have been observed to produce more IL-2 than do non- T_{FH} cells^{2,4}, consistent with the smaller amount of Blimp-1 in T_{FH} cells². Blimp-1-deficient $CD8^+$ T cells also exhibit greater IL-2 production^{6,7}. Memory $CD8^+$ T cells are also frequently characterized by their ability to produce large amounts of IL-2. Given the importance of IL-2 for T cell function and memory differentiation, *Il2* is a key Blimp-1 target gene.

Concluding remarks

Transcription factors drive B lymphocytes and T lymphocytes to differentiate into a variety of different effector and memory cells. Bcl-6 and Blimp-1 are unusual in that they are not unique to one lineage but are common to B cells, CD4⁺ T cells and CD8⁺ T cells. Although the roles of Bcl-6 and Blimp-1 in these cell lineage programs share general features—Bcl-6 frequently sustains proliferative potential but not terminal effector function, Blimp-1 enables secretion and effector functions but inhibits proliferation, and the two genes serve as a bimodal self-reinforcing genetic switch—the genes regulated by Bcl-6 and Blimp-1 to produce those phenotypes seem to be predominantly distinct in B cells, CD4⁺ T cells and CD8⁺ T cells, which highlights the complexity of the gene programs involved and the importance of additional layers of gene-expression regulation.

ACKNOWLEDGMENTS

Supported by a Pew Scholar Award and the National Institutes of Health (072543 and 063107 to S.C.).

Published online at <http://www.nature.com/natureimmunology/>.

Reprints and permissions information is available online at <http://npg.nature.com/reprintsandpermissions/>.

- Schoenberger, S.P. & Crotty, S. in *Fundamental Immunology*, 6th edn (ed. Paul, W.E.) 862–898 (Lippincott Williams & Wilkins, Philadelphia, 2008).
- Johnston, R.J. *et al.* Bcl6 and Blimp-1 are reciprocal and antagonistic regulators of T follicular helper cell differentiation. *Science* **325**, 1006–1010 (2009).
- Nurieva, R. *et al.* Bcl6 mediates the development of T follicular helper cells. *Science* **325**, 1001–1005 (2009).
- Yu, D. *et al.* The transcriptional repressor Bcl-6 directs T follicular helper cell lineage commitment. *Immunity* **31**, 457–468 (2009).
- Shin, H. *et al.* A role for the transcriptional repressor Blimp-1 in CD8⁺ T cell exhaustion during chronic viral infection. *Immunity* **31**, 309–320 (2009).
- Rutishauser, R.L. *et al.* Transcriptional repressor Blimp-1 promotes CD8⁺ T cell terminal differentiation and represses the acquisition of central memory T cell properties. *Immunity* **31**, 296–308 (2009).
- Kallies, A., Xin, A., Belz, G.T. & Nutt, S.L. Blimp-1 transcription factor is required for the differentiation of effector CD8⁺ T cells and memory responses. *Immunity* **31**, 283–295 (2009).
- Ye, B.H. *et al.* Alterations of a zinc finger-encoding gene, BCL-6, in diffuse large-cell lymphoma. *Science* **262**, 747–750 (1993).
- Baron, B.W. *et al.* Identification of the gene associated with the recurring chromosomal translocations t(3;14)(q27;q32) and t(3;22)(q27;q11) in B-cell lymphomas. *Proc. Natl. Acad. Sci. USA* **90**, 5262–5266 (1993).
- Kerckaert, J.P. *et al.* LAZ3, a novel zinc-finger encoding gene, is disrupted by recurring chromosome 3q27 translocations in human lymphomas. *Nat. Genet.* **5**, 66–70 (1993).
- Klein, U. & Dalla-Favera, R. Germinal centres: role in B-cell physiology and malignancy. *Nat. Rev. Immunol.* **8**, 22–33 (2008).
- Jardin, F., Ruminy, P., Bastard, C. & Tilly, H. The BCL6 proto-oncogene: a leading role during germinal center development and lymphomagenesis. *Pathol. Biol.* **55**, 73–83 (2007).
- Tangye, S. & Tarlinton, D. Memory B cells: Effectors of long-lived immune responses. *Eur. J. Immunol.* **39**, 9–11 (2009).
- Fairfax, K.A., Kallies, A., Nutt, S.L. & Tarlinton, D.M. Plasma cell development: from B-cell subsets to long-term survival niches. *Semin. Immunol.* **20**, 49–58 (2008).
- Allen, C.D.C., Okada, T. & Cyster, J.G. Germinal-center organization and cellular dynamics. *Immunity* **27**, 190–202 (2007).
- Di Noia, J.M. & Neuberger, M.S. Molecular mechanisms of antibody somatic hypermutation. *Annu. Rev. Biochem.* **76**, 1–22 (2007).
- Dent, A.L., Shaffer, A.L., Yu, X., Allman, D. & Staudt, L.M. Control of inflammation, cytokine expression, and germinal center formation by BCL-6. *Science* **276**, 589–592 (1997).
- Ye, B.H. *et al.* The BCL-6 proto-oncogene controls germinal-centre formation and Th2-type inflammation. *Nat. Genet.* **16**, 161–170 (1997).
- Toyama, H. *et al.* Memory B cells without somatic hypermutation are generated from Bcl6-deficient B cells. *Immunity* **17**, 329–339 (2002).
- Tunyaplin, C. *et al.* Direct repression of prdm1 by Bcl-6 inhibits plasmacytic differentiation. *J. Immunol.* **173**, 1158–1165 (2004).
- Cattoretti, G. *et al.* Deregulated BCL6 expression recapitulates the pathogenesis of human diffuse large B cell lymphomas in mice. *Cancer Cell* **7**, 445–455 (2005).
- Shapiro-Shelef, M. *et al.* Blimp-1 is required for the formation of immunoglobulin secreting plasma cells and pre-plasma memory B cells. *Immunity* **19**, 607–620 (2003).
- Shapiro-Shelef, M. & Calame, K. Regulation of plasma-cell development. *Nat. Rev. Immunol.* **5**, 230–242 (2005).
- Turner, C.A. Jr, Mack, D.H. & Davis, M.M. Blimp-1, a novel zinc finger-containing protein that can drive the maturation of B lymphocytes into immunoglobulin-secreting cells. *Cell* **77**, 297–306 (1994).
- Martins, G. & Calame, K. Regulation and functions of Blimp-1 in T and B lymphocytes. *Annu. Rev. Immunol.* **26**, 133–169 (2008).
- Kallies, A. *et al.* Plasma cell ontogeny defined by quantitative changes in blimp-1 expression. *J. Exp. Med.* **200**, 967–977 (2004).
- Shaffer, A.L. *et al.* Blimp-1 orchestrates plasma cell differentiation by extinguishing the mature B cell gene expression program. *Immunity* **17**, 51–62 (2002).
- Shaffer, A.L. *et al.* XBP1, downstream of Blimp-1, expands the secretory apparatus and other organelles, and increases protein synthesis in plasma cell differentiation. *Immunity* **21**, 81–93 (2004).
- Reimold, A.M. *et al.* Plasma cell differentiation requires the transcription factor XBP-1. *Nature* **412**, 300–307 (2001).
- Lin, Y., Wong, K. & Calame, K. Repression of c-myc transcription by Blimp-1, an inducer of terminal B cell differentiation. *Science* **276**, 596–599 (1997).
- Mendez, L.M. *et al.* CtBP is an essential corepressor for BCL6 autoregulation. *Mol. Cell. Biol.* **28**, 2175–2186 (2008).
- Fujita, N. *et al.* MTA3 and the Mi-2/NuRD complex regulate cell fate during B lymphocyte differentiation. *Cell* **119**, 75–86 (2004).
- Cimmino, L. *et al.* Blimp-1 attenuates Th1 differentiation by repression of ifng, tbx21, and bcl6 gene expression. *J. Immunol.* **181**, 2338–2347 (2008).
- Kallies, A. *et al.* Initiation of plasma-cell differentiation is independent of the transcription factor Blimp-1. *Immunity* **26**, 555–566 (2007).
- Zhu, J. & Paul, W.E. CD4 T cells: fates, functions, and faults. *Blood* **112**, 1557–1569 (2008).
- Kopf, M., Le Gros, G., Coyle, A.J., Kosco-Vilbois, M. & Brombacher, F. Immune responses of IL-4, IL-5, IL-6 deficient mice. *Immunol. Rev.* **148**, 45–69 (1995).
- Nurieva, R.I. *et al.* Generation of T follicular helper cells is mediated by interleukin-21 but independent of T helper 1, 2, or 17 cell lineages. *Immunity* **29**, 138–149 (2008).
- Tsiagbe, V.K. & Thorbecke, G.J. in *The Biology of Germinal Centers*. (eds. Thorbecke, G.J. & Tsiagbe, V.K.) 1–103 (Springer-Verlag, Berlin, 1998).
- Chatanova, T. *et al.* T follicular helper cells express a distinctive transcriptional profile, reflecting their role as non-Th1/Th2 effector cells that provide help for B cells. *J. Immunol.* **173**, 68–78 (2004).
- Kim, C.H. *et al.* Unique gene expression program of human germinal center T helper cells. *Blood* **104**, 1952–1960 (2004).
- Rasheed, A.-U., Rahn, H.-P., Sallusto, F., Lipp, M. & Müller, G. Follicular B helper T cell activity is confined to CXCR5^{hi}ICOS^{hi} CD4 T cells and is independent of CD57 expression. *Eur. J. Immunol.* **36**, 1892–1903 (2006).
- King, C., Tangye, S.G. & Mackay, C.R. T follicular helper (T_{FH}) cells in normal and dysregulated immune responses. *Annu. Rev. Immunol.* **26**, 741–766 (2008).
- Fazilleau, N., McHeyzer-Williams, L.J., Rosen, H. & McHeyzer-Williams, M.G. The function of follicular helper T cells is regulated by the strength of T cell antigen receptor binding. *Nat. Immunol.* **10**, 375–384 (2009).
- Ma, C.S. *et al.* Early commitment of naive human CD4⁺ T cells to the T follicular helper (T_{FH}) cell lineage is induced by IL-12. *Immunol. Cell Biol.* **87**, 590–600 (2009).
- McHeyzer-Williams, L.J., Pelletier, N., Mark, L., Fazilleau, N. & McHeyzer-Williams, M.G. Follicular helper T cells as cognate regulators of B cell immunity. *Curr. Opin. Immunol.* **21**, 266–273 (2009).
- Martins, G.A. *et al.* Transcriptional repressor Blimp-1 regulates T cell homeostasis and function. *Nat. Immunol.* **7**, 457–465 (2006).
- Dent, A.L., Hu-Li, J., Paul, W.E. & Staudt, L.M. T helper type 2 inflammatory disease in the absence of interleukin 4 and transcription factor STAT6. *Proc. Natl. Acad. Sci. USA* **95**, 13823–13828 (1998).
- Smith, K.M. *et al.* Th1 and Th2 CD4⁺ T cells provide help for B cell clonal expansion and antibody synthesis in a similar manner in vivo. *J. Immunol.* **165**, 3136–3144 (2000).
- Smith, K.M., Brewer, J.M., Rush, C.M., Riley, J. & Garside, P. In vivo generated Th1 cells can migrate to B cell follicles to support B cell responses. *J. Immunol.* **173**, 1640–1646 (2004).
- Reinhardt, R.L., Liang, H.E. & Locksley, R.M. Cytokine-secreting follicular T cells shape the antibody repertoire. *Nat. Immunol.* **10**, 385–393 (2009).
- Zaretsky, A.G. *et al.* T follicular helper cells differentiate from Th2 cells in response to helminth antigens. *J. Exp. Med.* **206**, 991–999 (2009).
- King, I.L. & Mohrs, M. IL-4-producing CD4⁺ T cells in reactive lymph nodes during helminth infection are T follicular helper cells. *J. Exp. Med.* **206**, 1001–1007 (2009).
- Hsu, H.C. *et al.* Interleukin 17-producing T helper cells and interleukin 17 orchestrate autoreactive germinal center development in autoimmune BXD2 mice. *Nat. Immunol.* **9**, 166–175 (2008).
- Haynes, N.M. *et al.* Role of CXCR5 and CCR7 in follicular Th cell positioning and appearance of a programmed cell death gene-1^{hi} germinal center-associated subpopulation. *J. Immunol.* **179**, 5099–5108 (2007).
- Gong, D. & Malek, T.R. Cytokine-dependent Blimp-1 expression in activated T cells inhibits IL-2 production. *J. Immunol.* **178**, 242–252 (2007).
- Kallies, A. *et al.* Transcriptional repressor Blimp-1 is essential for T cell homeostasis and self-tolerance. *Nat. Immunol.* **7**, 466–474 (2006).
- Intlekofer, A.M. *et al.* Requirement for T-bet in the aberrant differentiation of unhelped effector CD8⁺ T cells. *J. Exp. Med.* **204**, 2015–2021 (2007).
- Kaech, S.M. & Wherry, E.J. Heterogeneity and cell-fate decisions in effector and memory CD8⁺ T cell differentiation during viral infection. *Immunity* **27**, 393–405 (2007).

59. Yoshida, K. *et al.* Bcl6 controls granzyme B expression in effector CD8⁺ T cells. *Eur. J. Immunol.* **36**, 3146–3156 (2006).
60. Fukuda, T. *et al.* The murine BCL6 gene is induced in activated lymphocytes as an immediate early gene. *Oncogene* **11**, 1657–1663 (1995).
61. Sallusto, F., Geginat, J. & Lanzavecchia, A. Central memory and effector memory T cell subsets: function, generation, and maintenance. *Annu. Rev. Immunol.* **22**, 745–763 (2004).
62. Ichii, H. *et al.* Role for Bcl-6 in the generation and maintenance of memory CD8⁺ T cells. *Nat. Immunol.* **3**, 558–563 (2002).
63. Ichii, H., Sakamoto, A., Kuroda, Y. & Tokuhiya, T. Bcl6 acts as an amplifier for the generation and proliferative capacity of central memory CD8⁺ T cells. *J. Immunol.* **173**, 883–891 (2004).
64. Ichii, H. *et al.* Bcl6 is essential for the generation of long-term memory CD4⁺ T cells. *Int. Immunol.* **19**, 427–433 (2007).
65. Scheeren, F.A. *et al.* STAT5 regulates the self-renewal capacity and differentiation of human memory B cells and controls Bcl-6 expression. *Nat. Immunol.* **6**, 303–313 (2005).
66. Kuo, T.C. *et al.* Repression of BCL-6 is required for the formation of human memory B cells in vitro. *J. Exp. Med.* **204**, 819–830 (2007).
67. Fearon, D.T., Manders, P. & Wagner, S.D. Arrested differentiation, the self-renewing memory lymphocyte, and vaccination. *Science* **293**, 248–250 (2001).
68. Blink, E.J. *et al.* Early appearance of germinal center-derived memory B cells and plasma cells in blood after primary immunization. *J. Exp. Med.* **201**, 545–554 (2005).
69. Shvarts, A. *et al.* A senescence rescue screen identifies BCL6 as an inhibitor of anti-proliferative p19^{ARF}-p53 signaling. *Genes Dev.* **16**, 681–686 (2002).
70. Tomayko, M.M. *et al.* Systematic comparison of gene expression between murine memory and naive B cells demonstrates that memory B cells have unique signaling capabilities. *J. Immunol.* **181**, 27–38 (2008).
71. Mueller, S.N. & Ahmed, R. High antigen levels are the cause of T cell exhaustion during chronic viral infection. *Proc. Natl. Acad. Sci. USA* **106**, 8623–8628 (2009).
72. Shin, H. & Wherry, E.J. CD8 T cell dysfunction during chronic viral infection. *Curr. Opin. Immunol.* **19**, 408–415 (2007).
73. Ha, S.J., West, E.E., Araki, K., Smith, K.A. & Ahmed, R. Manipulating both the inhibitory and stimulatory immune system towards the success of therapeutic vaccination against chronic viral infections. *Immunol. Rev.* **223**, 317–333 (2008).
74. Barber, D.L. *et al.* Restoring function in exhausted CD8 T cells during chronic viral infection. *Nature* **439**, 682–687 (2006).
75. Ejrnaes, M. *et al.* Resolution of a chronic viral infection after interleukin-10 receptor blockade. *J. Exp. Med.* **203**, 2461–2472 (2006).
76. Brooks, D.G. *et al.* Interleukin-10 determines viral clearance or persistence *in vivo*. *Nat. Med.* **12**, 1301–1309 (2006).
77. Brooks, D.G. *et al.* IL-10 and PD-L1 operate through distinct pathways to suppress T-cell activity during persistent viral infection. *Proc. Natl. Acad. Sci. USA* **105**, 20428–20433 (2008).
78. Huynh, K.D., Fischle, W., Verdin, E. & Bardwell, V.J. BCOR, a novel corepressor involved in BCL-6 repression. *Genes Dev.* **14**, 1810–1823 (2000).
79. Ghetu, A.F. *et al.* Structure of a BCOR corepressor peptide in complex with the BCL6 BTB domain dimer. *Mol. Cell* **29**, 384–391 (2008).
80. Dhordain, P. *et al.* Corepressor SMRT binds the BTB/POZ repressing domain of the LAZ3/BCL6 oncoprotein. *Proc. Natl. Acad. Sci. USA* **94**, 10762–10767 (1997).
81. Dhordain, P. *et al.* The LAZ3(BCL-6) oncoprotein recruits a SMRT/mSIN3A/histone deacetylase containing complex to mediate transcriptional repression. *Nucleic Acids Res.* **26**, 4645–4651 (1998).
82. Okabe, S. *et al.* BAZF, a novel Bcl6 homolog, functions as a transcriptional repressor. *Mol. Cell. Biol.* **18**, 4235–4244 (1998).
83. Dhordain, P. *et al.* Colocalization and heteromerization between the two human oncogene POZ/zinc finger proteins, LAZ3 (BCL6) and PLZF. *Oncogene* **19**, 6240–6250 (2000).
84. Phan, R.T., Saito, M., Basso, K., Niu, H. & Dalla-Favera, R. BCL6 interacts with the transcription factor Miz-1 to suppress the cyclin-dependent kinase inhibitor p21 and cell cycle arrest in germinal center B cells. *Nat. Immunol.* **6**, 1054–1060 (2005).
85. Jaye, D.L. *et al.* The BCL6-associated transcriptional co-repressor, MTA3, is selectively expressed by germinal centre B cells and lymphomas of putative germinal centre derivation. *J. Pathol.* **213**, 106–115 (2007).
86. Chevallier, N. *et al.* ETO protein of t(8;21) AML is a corepressor for Bcl-6 B-cell lymphoma oncoprotein. *Blood* **103**, 1454–1463 (2004).
87. Parekh, S. *et al.* BCL6 programs lymphoma cells for survival and differentiation through distinct biochemical mechanisms. *Blood* **110**, 2067–2074 (2007).
88. Vasanwala, F.H., Kusam, S., Toney, L.M. & Dent, A.L. Repression of AP-1 function: a mechanism for the regulation of Blimp-1 expression and B lymphocyte differentiation by the B cell lymphoma-6 protooncogene. *J. Immunol.* **169**, 1922–1929 (2002).
89. Ci, W. *et al.* The BCL6 transcriptional program features repression of multiple oncogenes in primary B cells and is deregulated in DLBCL. *Blood* **113**, 5536–5548 (2009).
90. Allman, D. *et al.* BCL-6 expression during B-cell activation. *Blood* **87**, 5257–5268 (1996).
91. Niu, H., Ye, B.H. & Dalla-Favera, R. Antigen receptor signaling induces MAP kinase-mediated phosphorylation and degradation of the BCL-6 transcription factor. *Genes Dev.* **12**, 1953–1961 (1998).
92. Bereshchenko, O.R., Gu, W. & Dalla-Favera, R. Acetylation inactivates the transcriptional repressor BCL6. *Nat. Genet.* **32**, 606–613 (2002).
93. Hirata, Y. *et al.* BCL6 degradation caused by the interaction with the C-terminus of pro-HB-EGF induces cyclin D2 expression in gastric cancers. *Br. J. Cancer* **100**, 1320–1329 (2009).
94. Lin, K.I., Lin, Y. & Calame, K. Repression of c-myc is necessary but not sufficient for terminal differentiation of B lymphocytes in vitro. *Mol. Cell. Biol.* **20**, 8684–8695 (2000).
95. Lin, K.I., Angelin-Duclos, C., Kuo, T.C. & Calame, K. Blimp-1-dependent repression of Pax-5 is required for differentiation of B cells to immunoglobulin M-secreting plasma cells. *Mol. Cell. Biol.* **22**, 4771–4780 (2002).
96. Piskurich, J.F. *et al.* BLIMP-1 mediates extinction of major histocompatibility class II transactivator expression in plasma cells. *Nat. Immunol.* **1**, 526–532 (2000).
97. Ghosh, N., Gyory, I., Wright, G., Wood, J. & Wright, K.L. Positive regulatory domain 1 binding factor 1 silences class II transactivator expression in multiple myeloma cells. *J. Biol. Chem.* **276**, 15264–15268 (2001).
98. Quong, M.W., Romanow, W.J. & Murre, C. E protein function in lymphocyte development. *Annu. Rev. Immunol.* **20**, 301–322 (2002).
99. Kamimura, D. & Bevan, M.J. Endoplasmic reticulum stress regulator XBP-1 contributes to effector CD8⁺ T cell differentiation during acute infection. *J. Immunol.* **181**, 5433–5441 (2008).
100. Martins, G.A., Cimmino, L., Liao, J., Magnusdottir, E. & Calame, K. Blimp-1 directly represses Il2 and the Il2 activator Fos, attenuating T cell proliferation and survival. *J. Exp. Med.* **205**, 1959–1965 (2008).